

Complexity of the deep San Andreas Fault zone defined by cascading tremor

David R. Shelly

U.S. Geological Survey, 345 Middlefield Rd MS910, Menlo Park, CA 94025

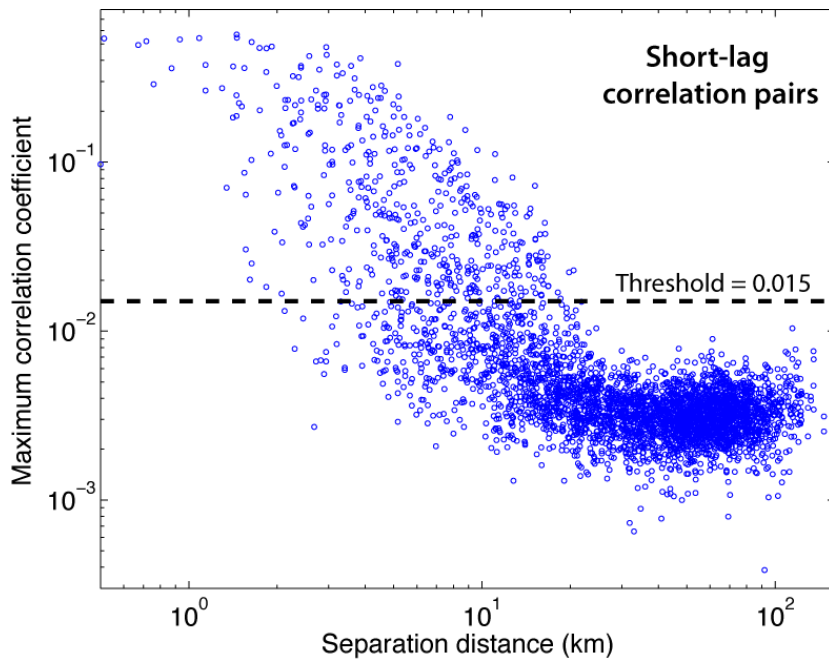


Figure S1. Family-pair correlation values as a function of separation distance. Some source pairs separated by up to 20 km are correlated in time, while others with much smaller separations are not correlated. Scales are logarithmic.

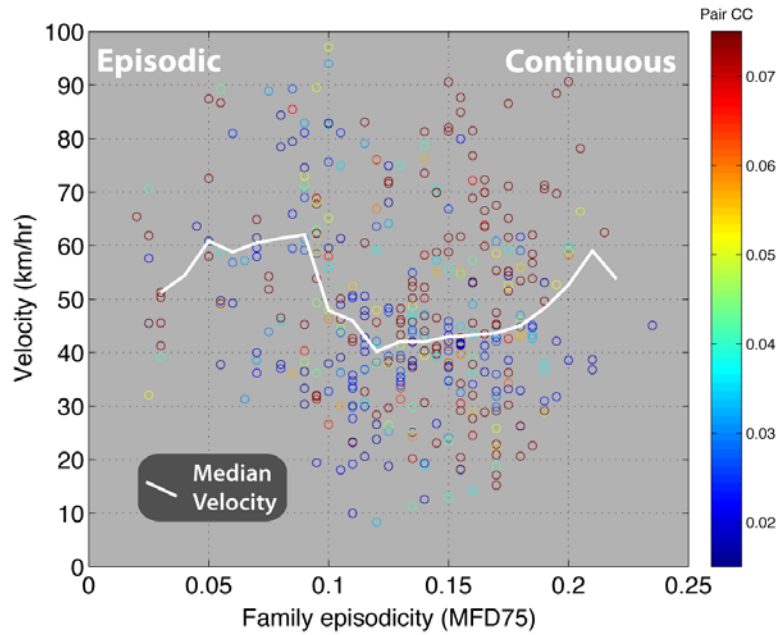


Figure S2. Migration velocity as a function of family episodicity, averaged for each LFE family pair. Median is calculated using a centered moving window 0.03 units in width. Episodicity is from ref (32), where MFD75 represents the minimum fraction of days necessary to contain at least 75% of total events in each family. LFE family episodicity may be inherited from surrounding slow slip, which could explain the lack of correlation with tremor propagation velocity.